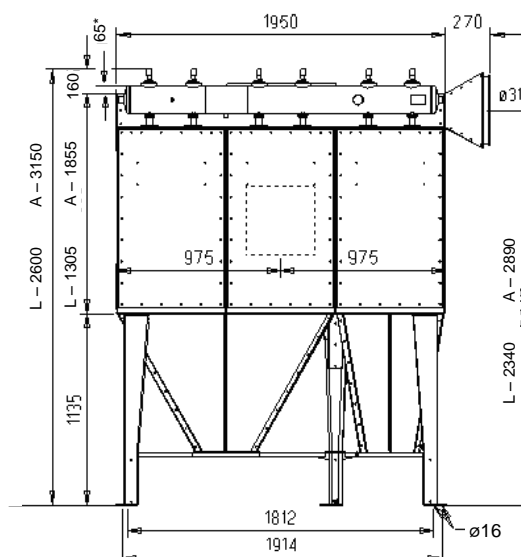
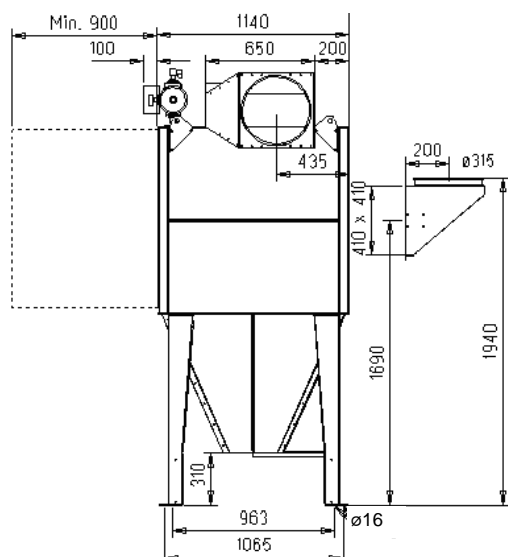


## FMC(Z)200 Cartridge Filter

### FMC200-6L and 6A hopper with flange for discharge



All dimensions in mm.

\* 65 mm to be included at top mounted fan

#### Filter material

Filter cartridge materials for most applications are available, dependent on dust type, dust load and efficiency requirements. The cartridges are designed according to the latest research and are patented.

The cartridges are produced from materials that can be incinerated.

#### Inlet options

Dia. 160, 250, 315, 400, 500 mm.

Dia. 500: two 400 mm inlets are assembled in one with a T-pipe.

#### Outlet options

Dia. 160, 250, 315, 400, 500, 560 and 630 mm.

Dia. 500: also available on top.

Dia. 560 and 630: high capacity clean air duct is necessary.

Rectangular flange possible.

#### Access door

Hinged door is optional for FMC200 type L.

#### Dust outlet

Hopper with 300 x 300 mm flange.

#### Leg extension

Extension up to 2000 mm possible.

Telescopic variable 500 mm

Specifications	Standard
Filter housing	Galvanised steel, 2 mm
Filter cartridge material	CA100 (polyester)
Air inlet, diameter	315 mm (type 6L); 500 mm (type 6A)
Door	Bolted door (lift off type)
Cleaning of cartridges	Clean, dry compressed air, 6 bar, 24V DC Connection: 1" pipe thread Average normal consumption: FMC200-6L: < 9,6 Nm <sup>3</sup> /h FMC200-6A: < 15,9 Nm <sup>3</sup> /h Down time cleaning: 1,3 Nm <sup>3</sup> #
Controller	DFC-08M (voltage supply 230V / 110V)
Max. vacuum	6000 Pa
Max. overpressure	1500 Pa (3000 Pa at FMCZ)
Temperature	-20°C to +70°C

# Down time cleaning at 6 second interval time requires 22 Nm<sup>3</sup>/h compressor capacity.

Type	FMC200-6L		FMC200-6A	
	Polyester	Cellulose	Polyester	Cellulose
Max. air volume* (m <sup>3</sup> /h)	9,600	9,600	15,900	15,900
Filter area (m <sup>2</sup> )	96	216	159	348
Weight (kg), excl. fan	637	637	740	740

\* Max. air volume is dependent on the actual dust type.

### Accessories

Fan, top mounted	0 to 15,900 m <sup>3</sup> /h
Filter materials	3 other media also available
Platform / ladder	Galvanised steel, 900 x 1000 mm platform and access ladder for maintenance purposes
Noise enclosure	Galvanised steel
Leg extension	500, 1000, 1500 or 2000 mm
QF duct system	100 to 500 mm

### Fan

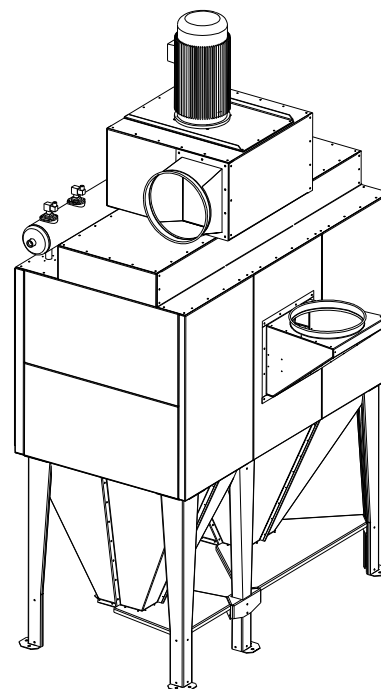
A range of fans for installation next to the filter is also available, for special pressure or airflow requirements.

### Controller

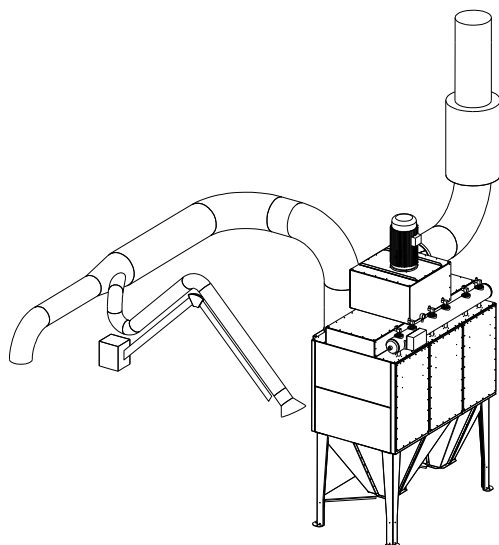
The built-in controller has indicators for power on, cleaning, stop and after-cleaning.

The controller's standard setting is for cleaning on demand when the differential pressure exceeds a pre-set value. This means that the compressed air consumption may be reduced to below 0,1 % of the total airflow. The controller also has indicators for filter pressure loss and for a high-pressure alarm.

Standard inlet and outlet position:



### Example of possible installation of FMC200-6L with QF duct connection and cellulose cartridges:



### Installation for extraction of welding fume and metallic dust.

Capacity: 6,000 m<sup>3</sup>/h – Filter load : 28 m<sup>3</sup>/m<sup>2</sup>/h

Recom. velocity of the air in the extraction pipes: 20 m/s

### Necessary equipment for this installation:

FMC200-6L

Fan type: FM 831, standard motor 11 kW

Inlet diameter and position: ø315 mm, from top

Controller: DFC-08M

Outlet diameter and position: ø 315 mm, RD 270

QF duct system: ø 125 mm to ø 315 mm

In-line air silencer ø 315 mm

Intermediate pressure arms ø125 mm

Suction spot ø 250 mm for connection to iron grinding machine