

FlexFilter 13 and 18

High vacuum filter used in application with a working vacuum of max. 40.000 Pa.



FlexFilter-13-C-A with 100 liter bin

The FlexFilter 13 and 18 are high vacuum filters used in applications with a working vacuum of max. 40.000 Pa.

The FlexFilter can be used in applications where there is a high content of dry dust particles.

Description

The filter is made in galvanised steel sheet and modular elements which makes it a very competitive alternative to other high vacuum filters.

The filter can be supplied with either cartridges or cassettes depending on the air flow, the dust type and the dust concentration. The FlexFilter 13 and 18 are available in two heights – type L and A.

The cartridges/cassettes are cleaned automatically by a high-efficiency, low energy consuming compressed air valve system activated by an integral electronic controller. The FlexFilter is easy to maintain due to the following features:

- inspection and change of the filter elements can take place within a few minutes
- easy access for service of the cleaning valves, the controller, the compressed air tank and the filter elements

FlexFilter – XX – Y – Z – V

High Vacuum Filter ———

Filter house diameter mm ———

C: Cartridge; K:Cassette ———

Height of filter element L or A ———

If cassettes, numbers of rows ———

in each cassette.

Filter type	Filter area (m ²)	Filter cartridge / element	Bin size (liter)
FlexFilter-13-C-L	32 *	8 UniClean type 40	50
FlexFilter-13-C-A	53 *	8 UniClean type 66	50
FlexFilter-18-C-L	64 *	16 UniClean type 40	50
FlexFilter-18-C-A	106 *	16 UniClean type 66	50
FlexFilter-13-K-L-4	15	2 cassettes - 4 rows	50
FlexFilter-13-K-L-6	22	2 cassettes - 6 rows	50
FlexFilter-18-K-L-4	30	4 cassettes - 4 rows	50
FlexFilter-18-K-L-6	44	4 cassettes - 6 rows	50

* UniClean cartridge type CA 175 : Filter area approx 2,2 x the table area.

Specifications

By ordering, please specify filter type and

- filter version
 - Non-explosive dust
- hopper type
 - bin, standard or large
 - hopper w. outlet type FM (295x295 mm²)
- filter element type
 - UniClean cartridge#
 - Cassette#
- controller type DFC-08M# or no controller

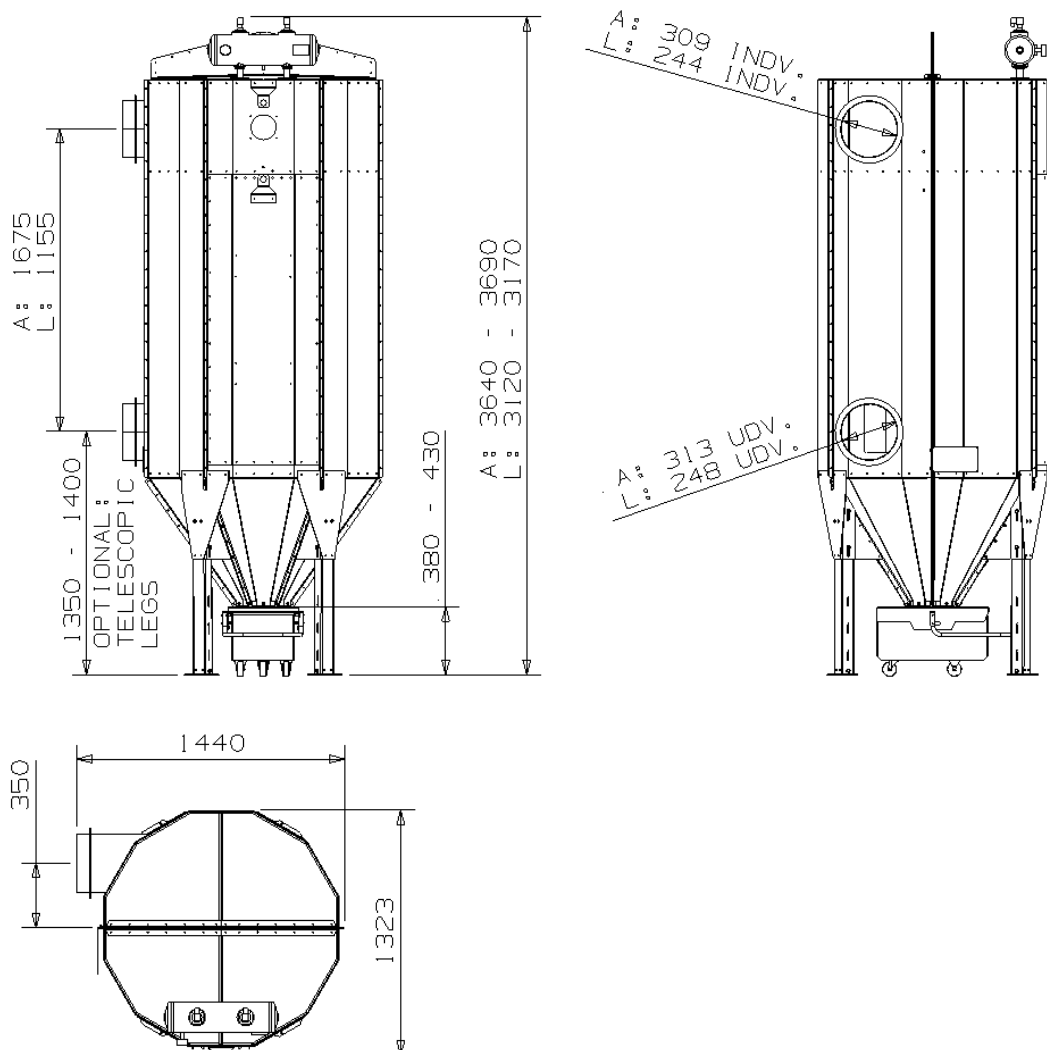
Accessories

- Large bin, 100 litre
- Rotary valve
- Double flap out feeding device#
- Support structure (please specify dimensions)

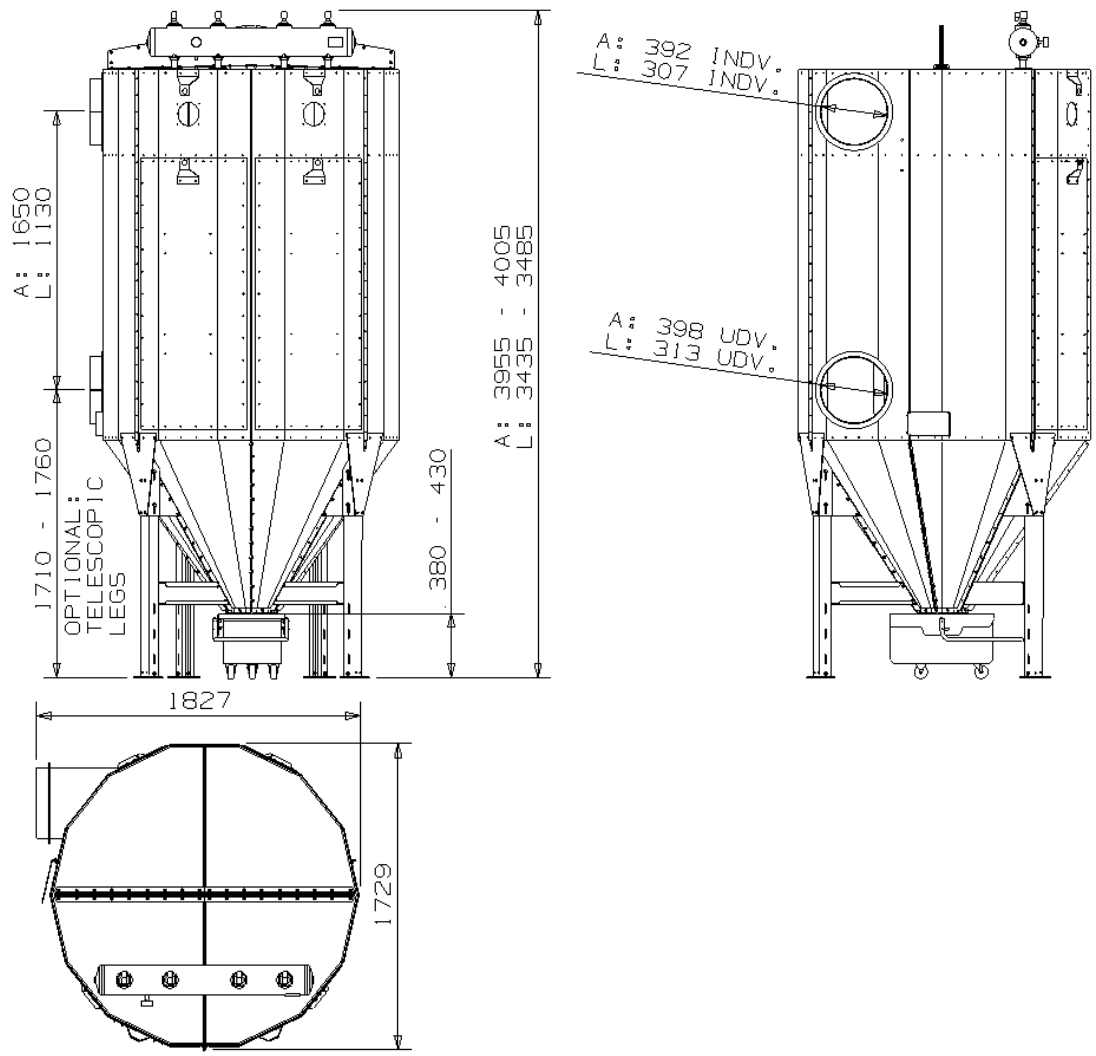
Please consult separate technical leaflet.

Dimensions

FlexFilter 13 L/A with 50 l bin with wheels

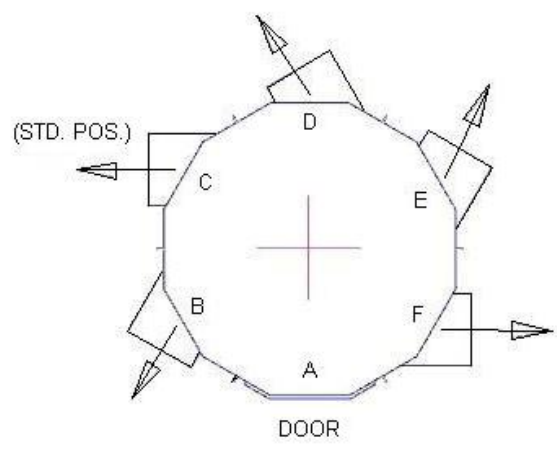


FlexFilter 18 L/A with 50 I bin with wheels

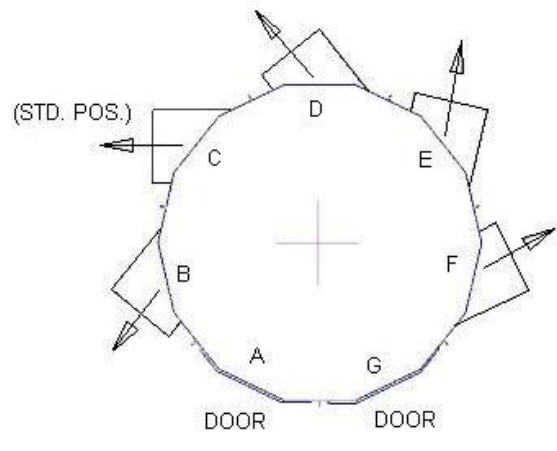


Outlet position

FlexFilter 13 L/A

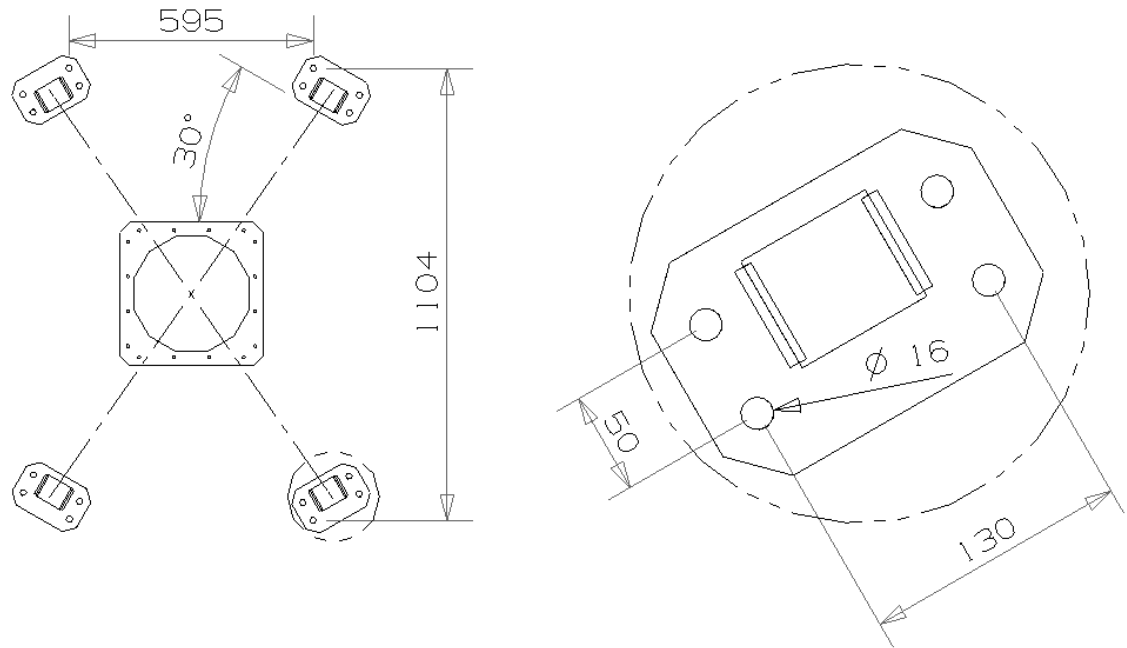


FlexFilter 18 L/A



Foot plates position

FlexFilter 13 L/A



FlexFilter 18 L/A

